

Inspiration for the bike came from the Tron films and the famous light cycles. We wanted to create a 1950's retro futurist vision of that motorcycle with a more organic animalistic feel using folded and shaped metal. Influences are also taken from Egyptian art. When viewed from above, the bike resembles a cobra snake.

## Key Features

Fully functional electric bike  
Accent LED's.  
unusual visuals



[Link to video - bike in action](#)

[Link to video - making of](#)

Offers in the region of

**£5,000**

Dimensions

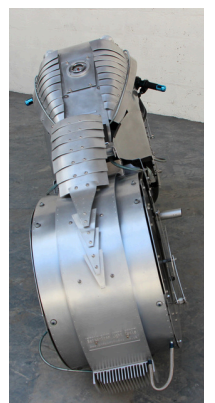
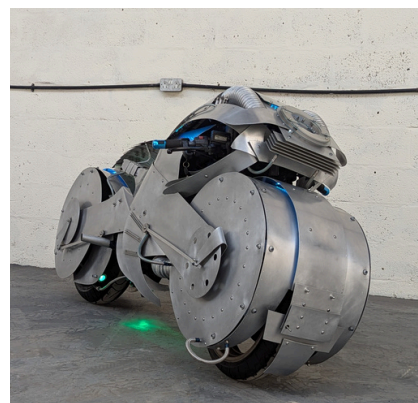
L: 230cm

W: 85cm

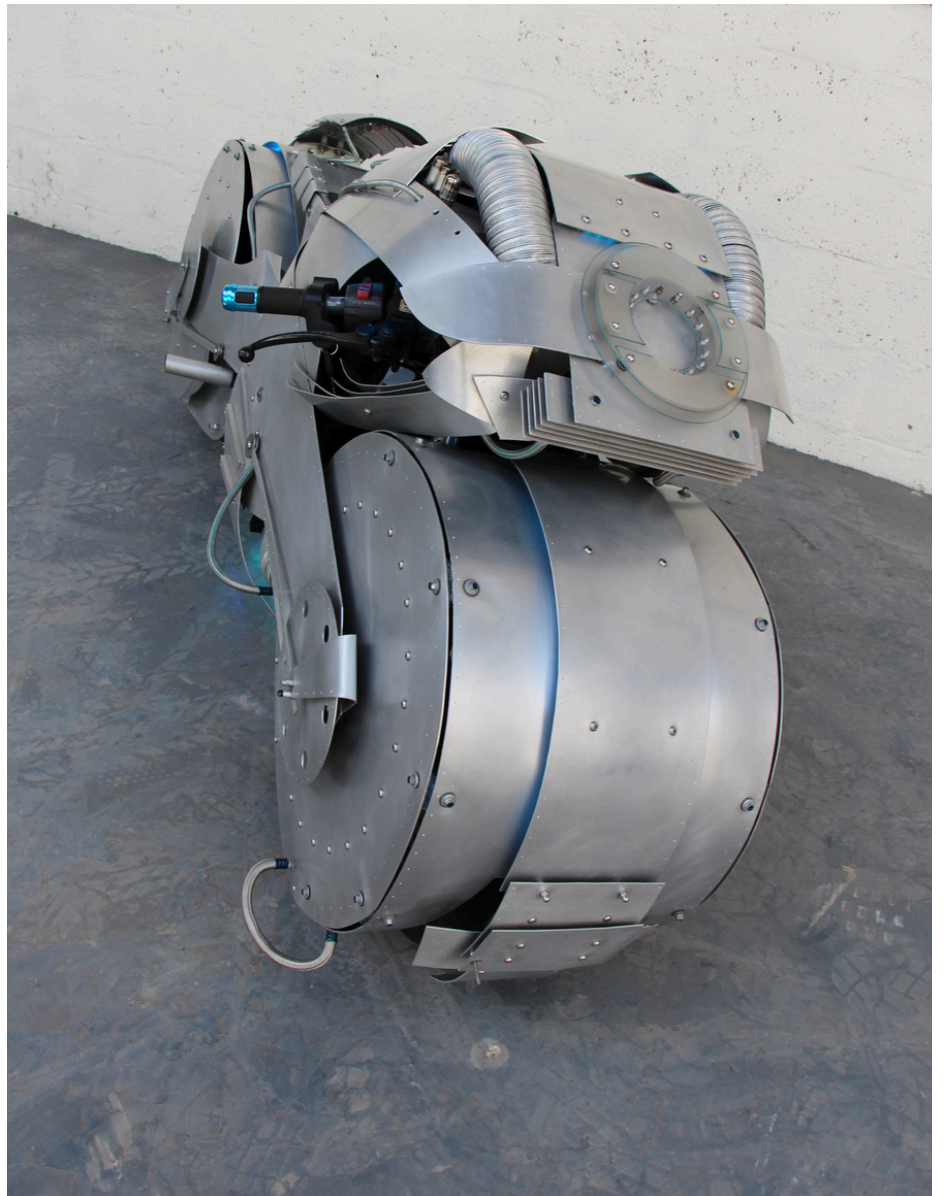
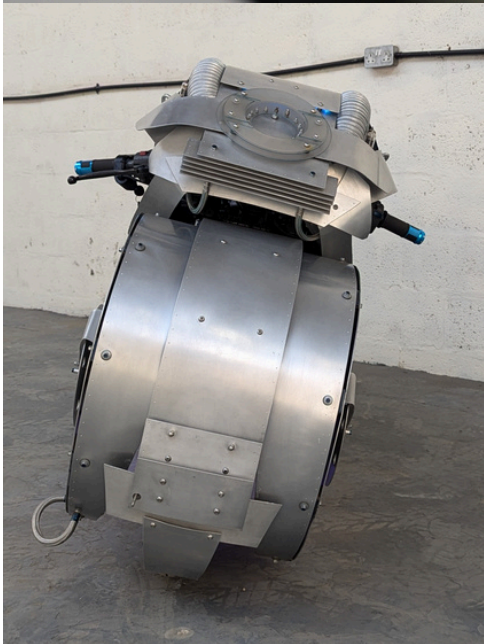
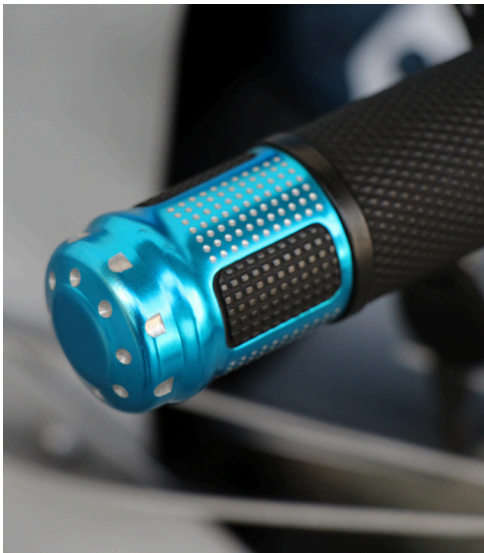
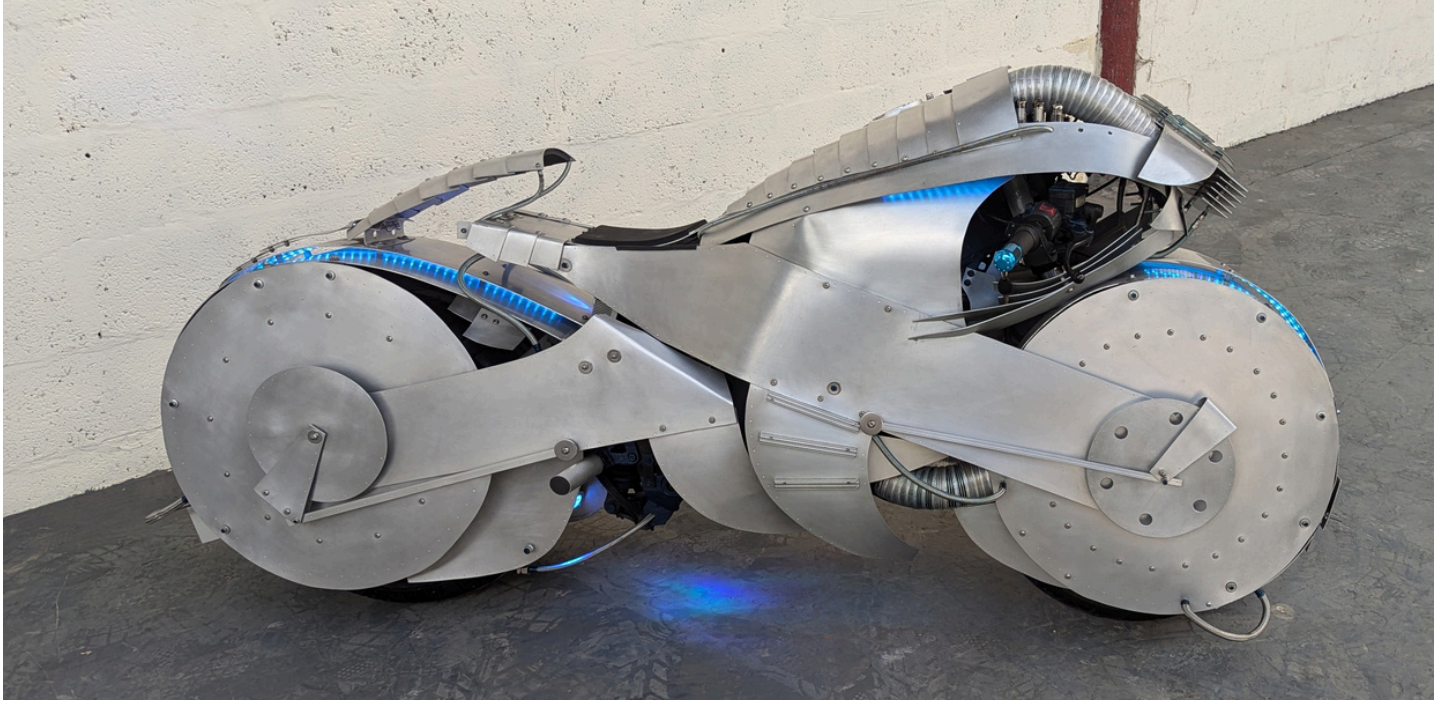
H: 105cm

Weight 200Kg

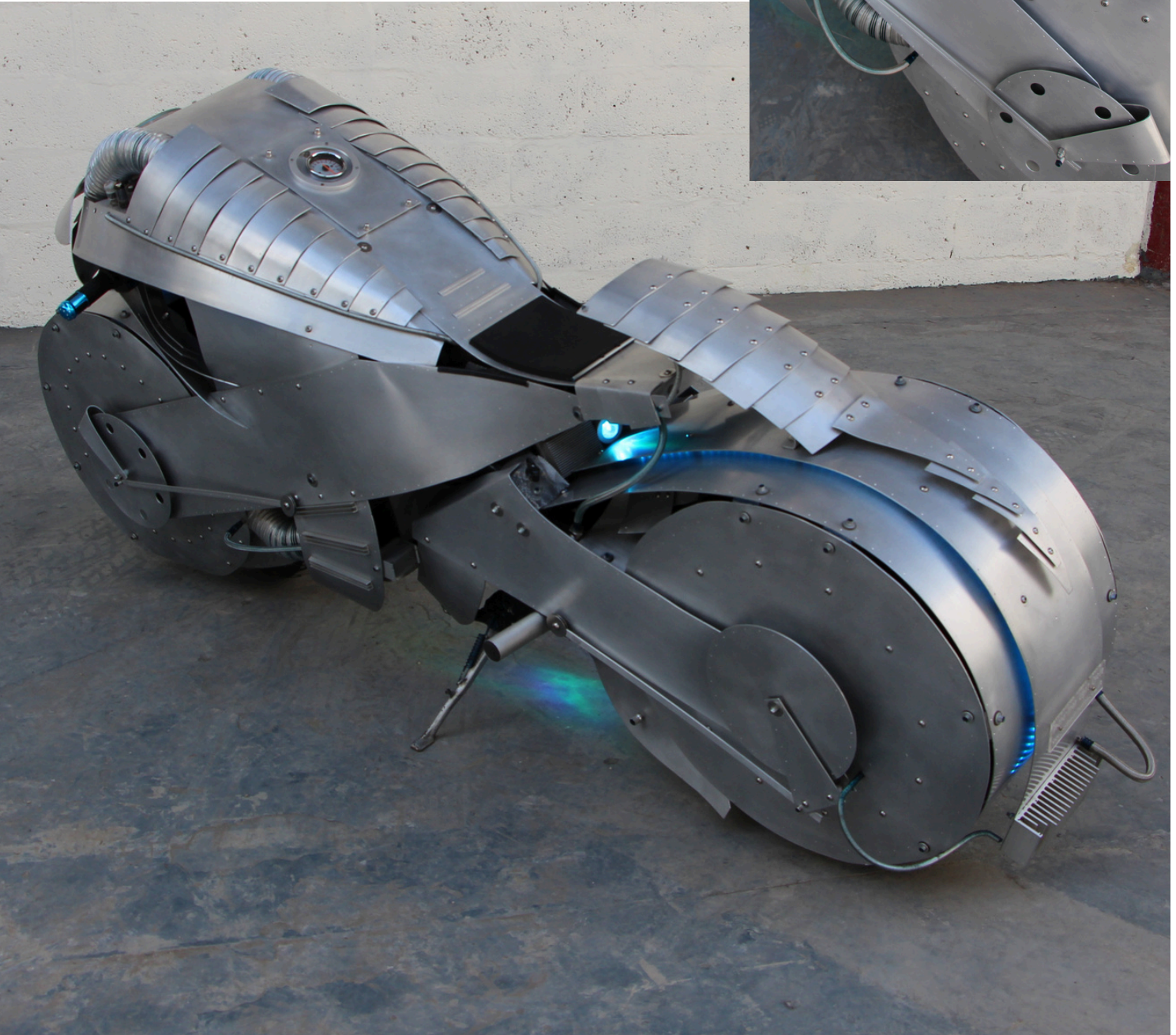
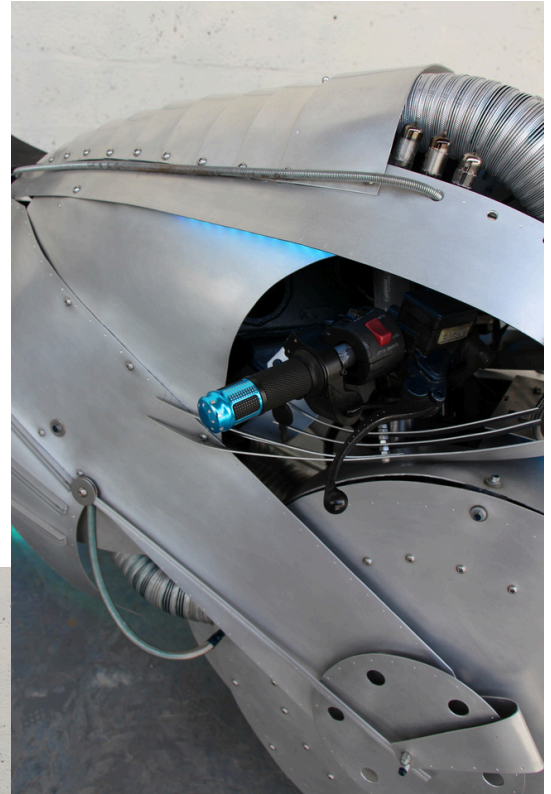
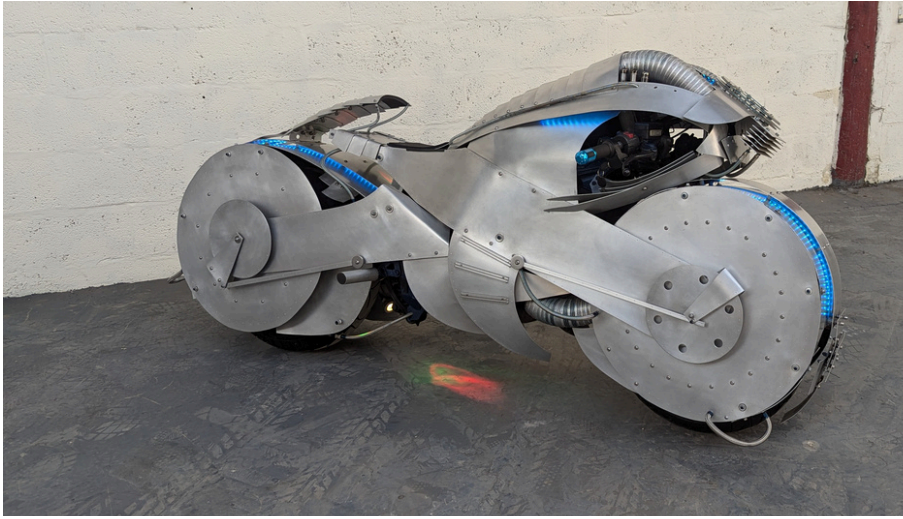
This is the perfect opportunity to own a unique film-inspired prop from Podpadstudios. This is a fully working electric bike. Ideal for a private collection.



# Retro Tron



# Retro Tron



# Retro Tron

